



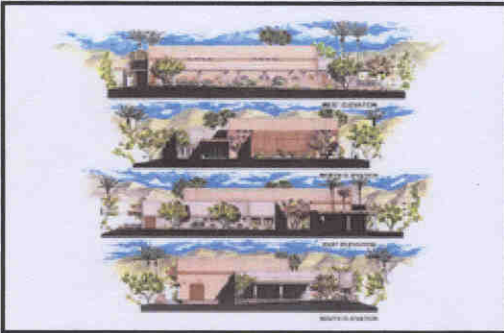
Project: Metal Stamping
Manufacturing Facility
Completion: March 2003
Size: 14,000 sq.ft.

[Click to view project details](#)



Project: Bay Area Chinese Christian
School, Alameda, CA
**Wall
Installation:** April 2003
Size: 30,000 sq.ft.

[Click to view project details](#)



Project: Cabazon Community
Center
Completion: November 2002
Size: 11,000 sq.ft.

[Click to view project details](#)

Project: Chula Vista Elementary
Multi-Purpose Facility
Completion: July 2001
Size: 7,500 sq.ft.

[Click to view project details](#)